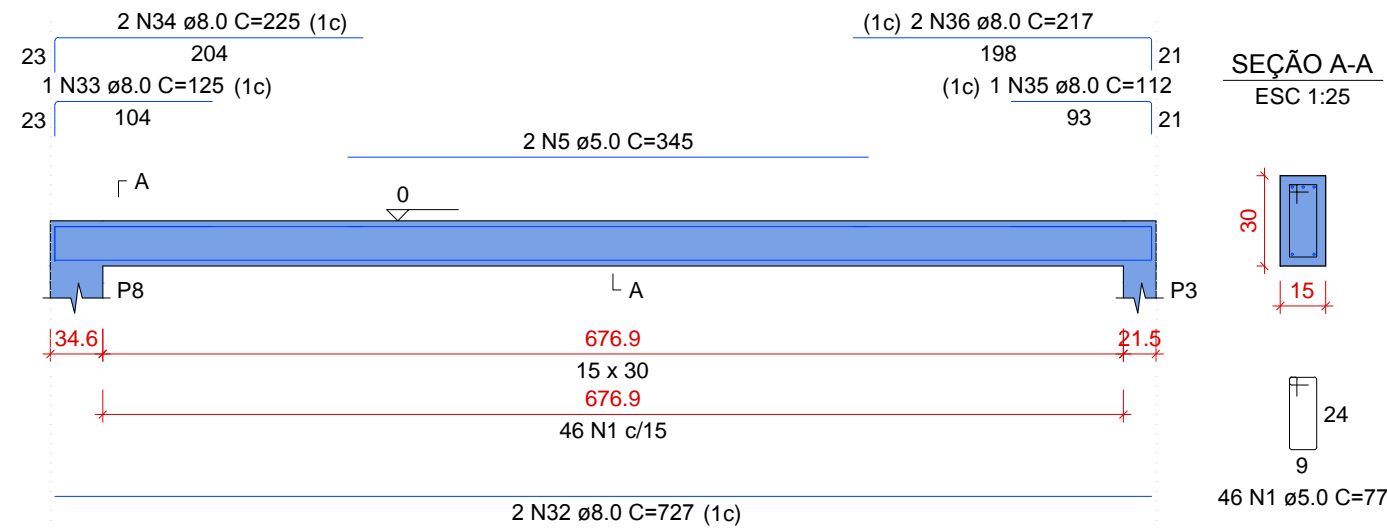


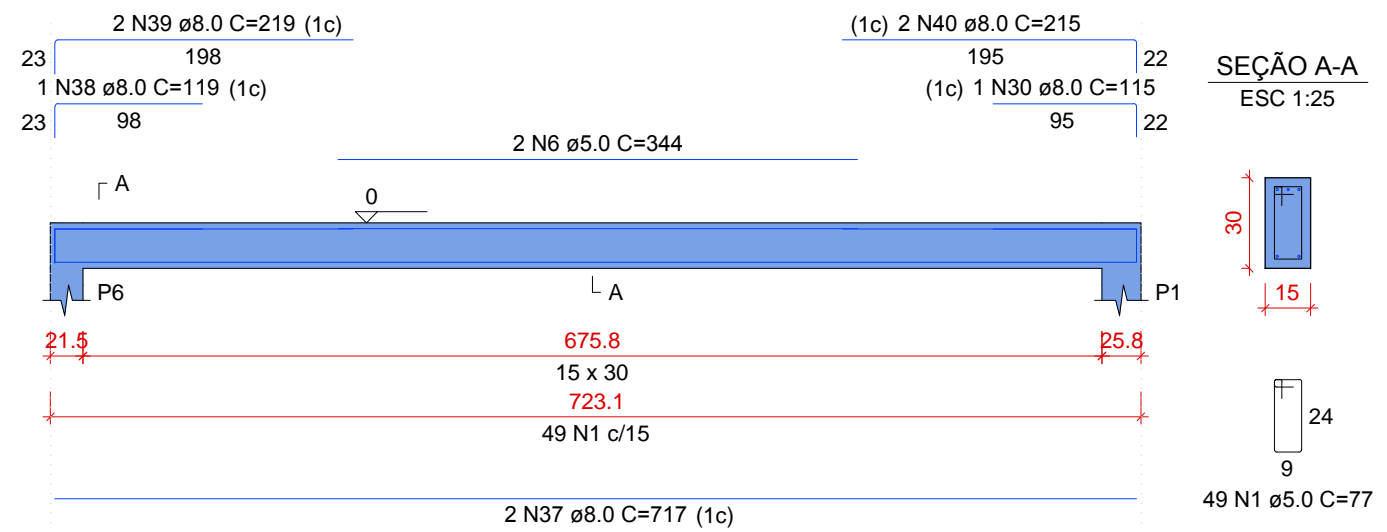
V23

ESC 1:50



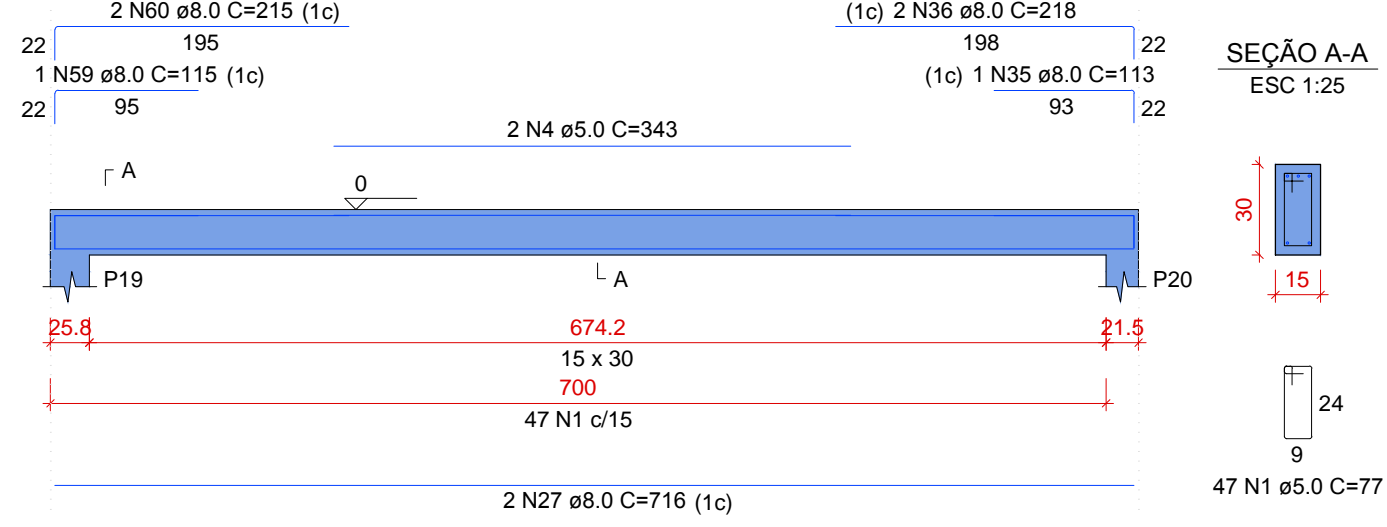
V27

ESC 1:50



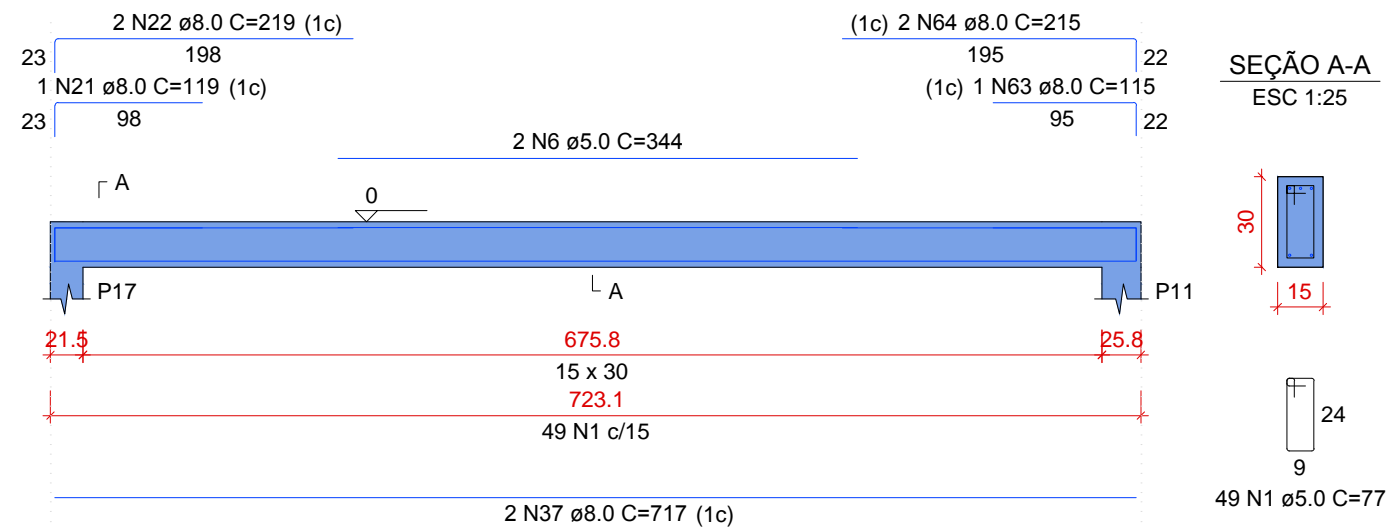
V31

ESC 1:50



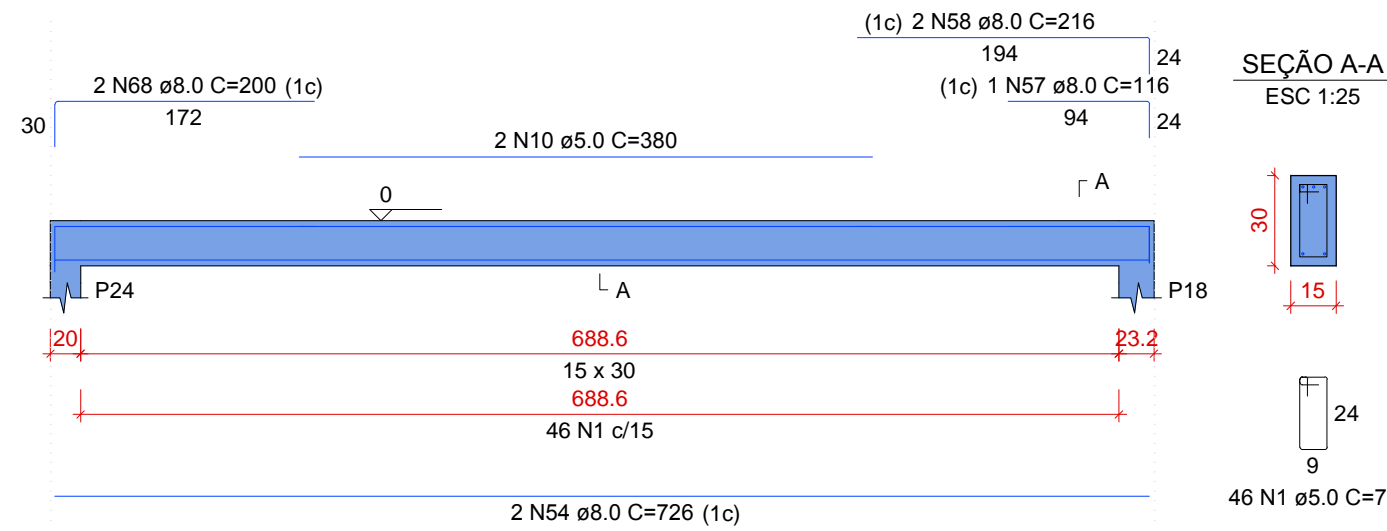
V35

ESC 1:50



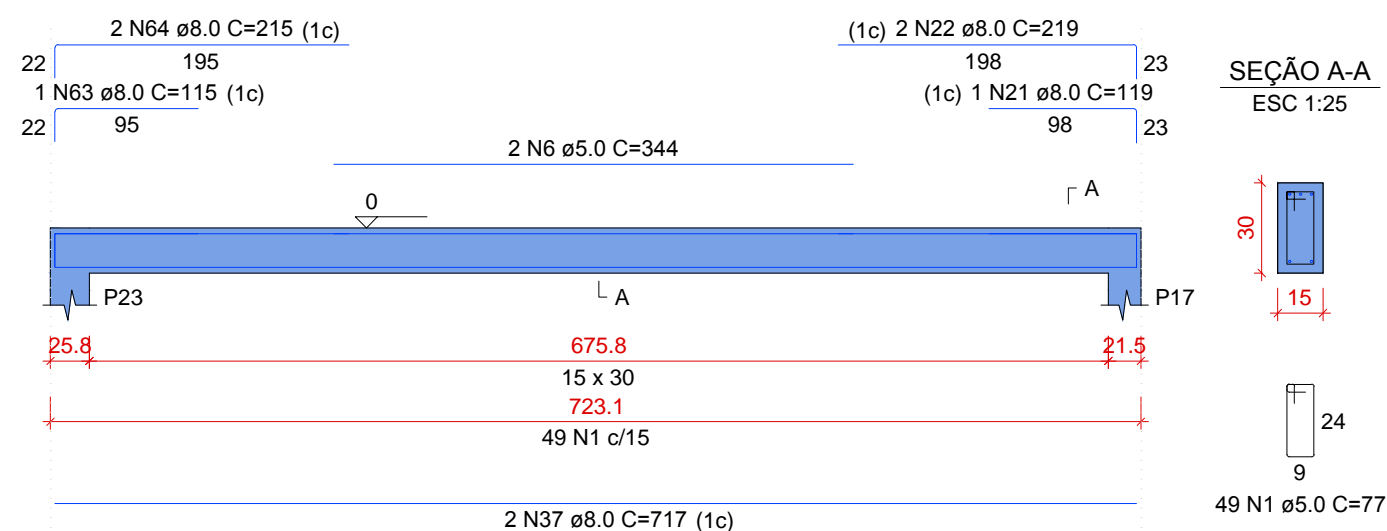
V38

ESC 1:50



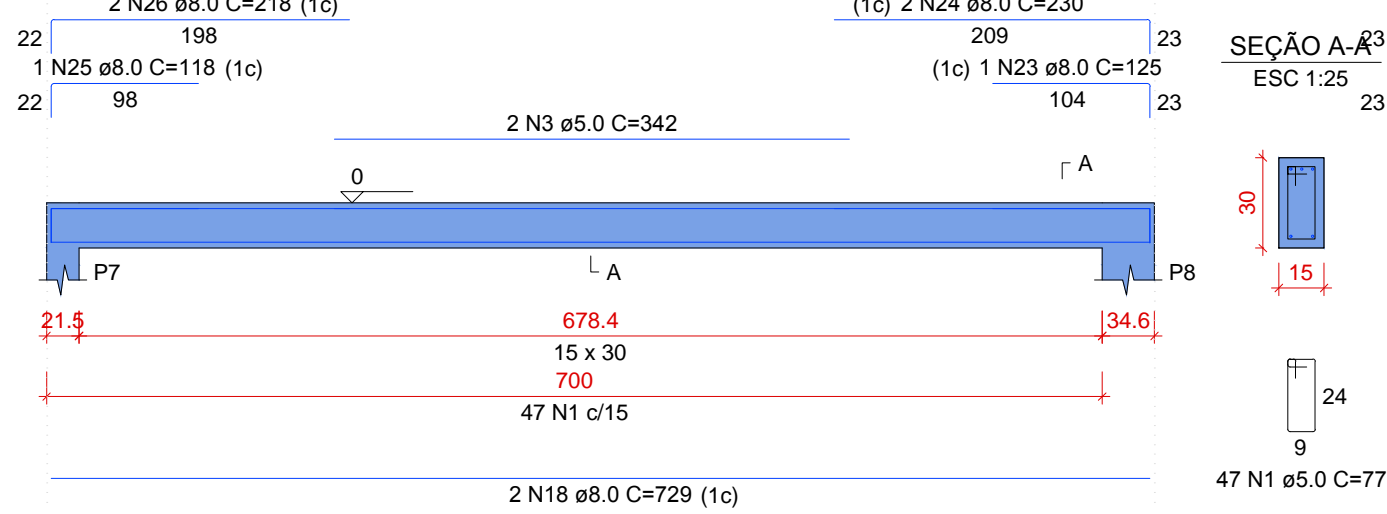
V41

ESC 1:50



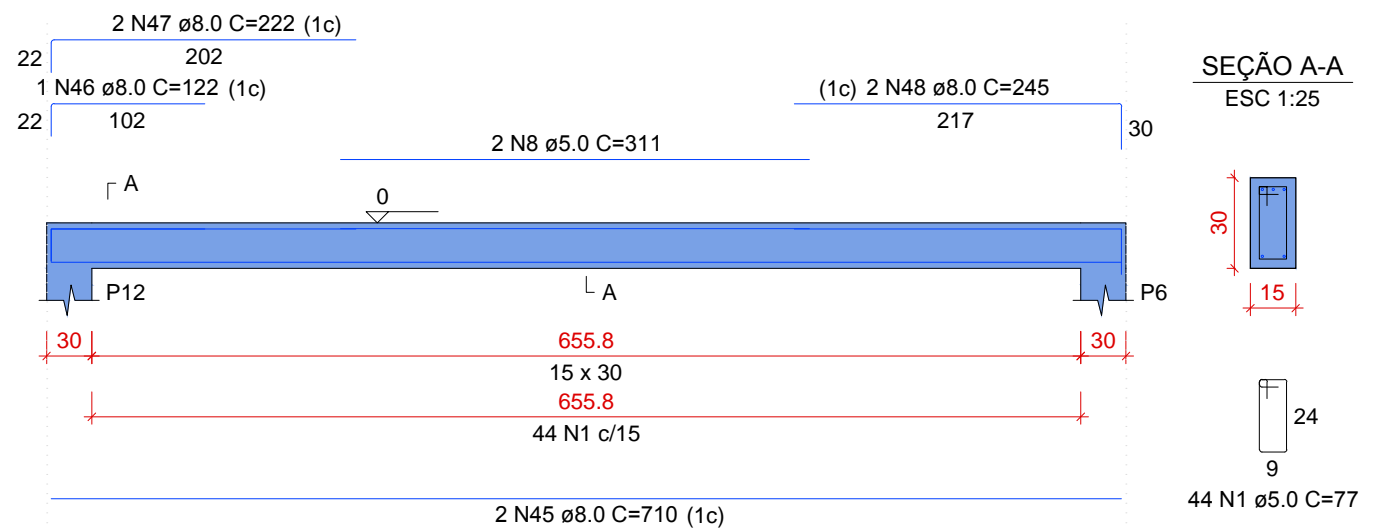
V24

ESC 1:50



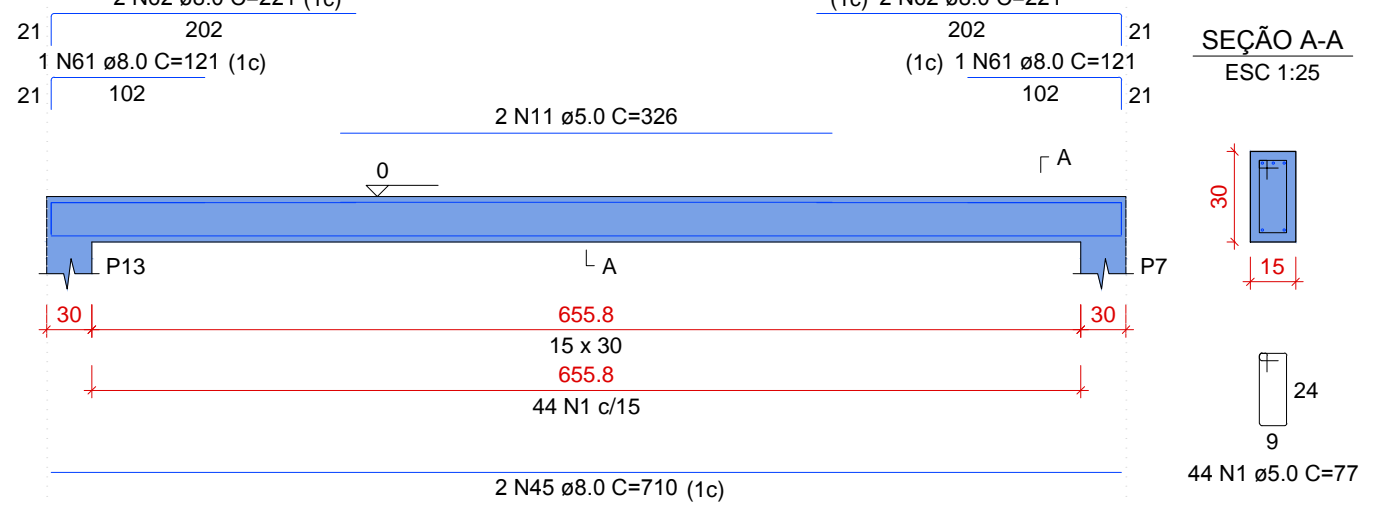
V28

ESC 1:50



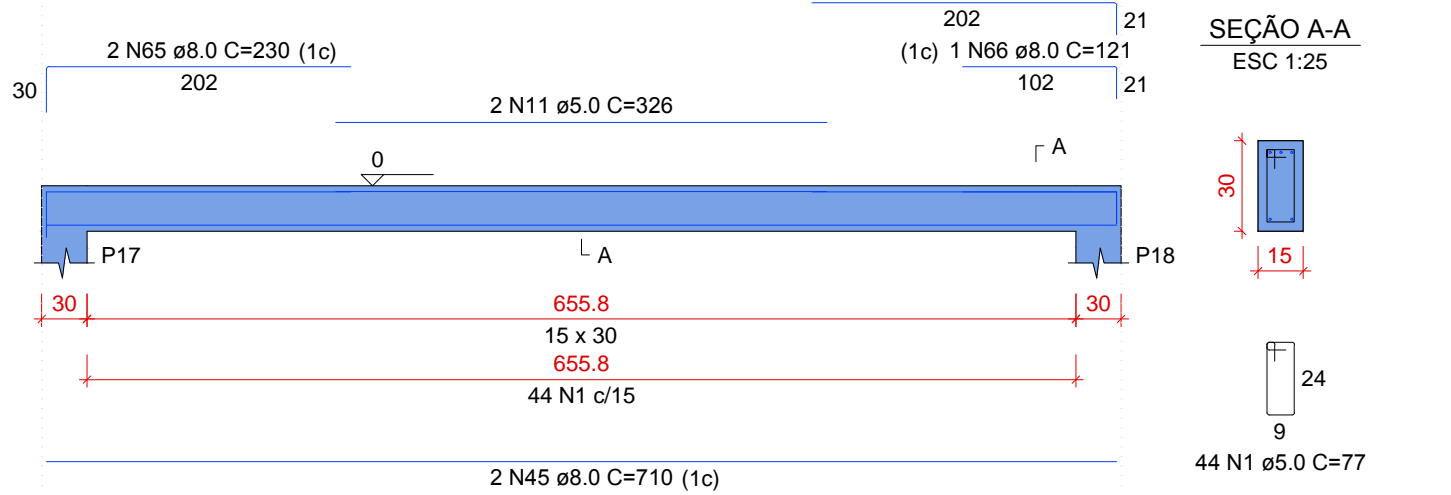
V32

ESC 1:50



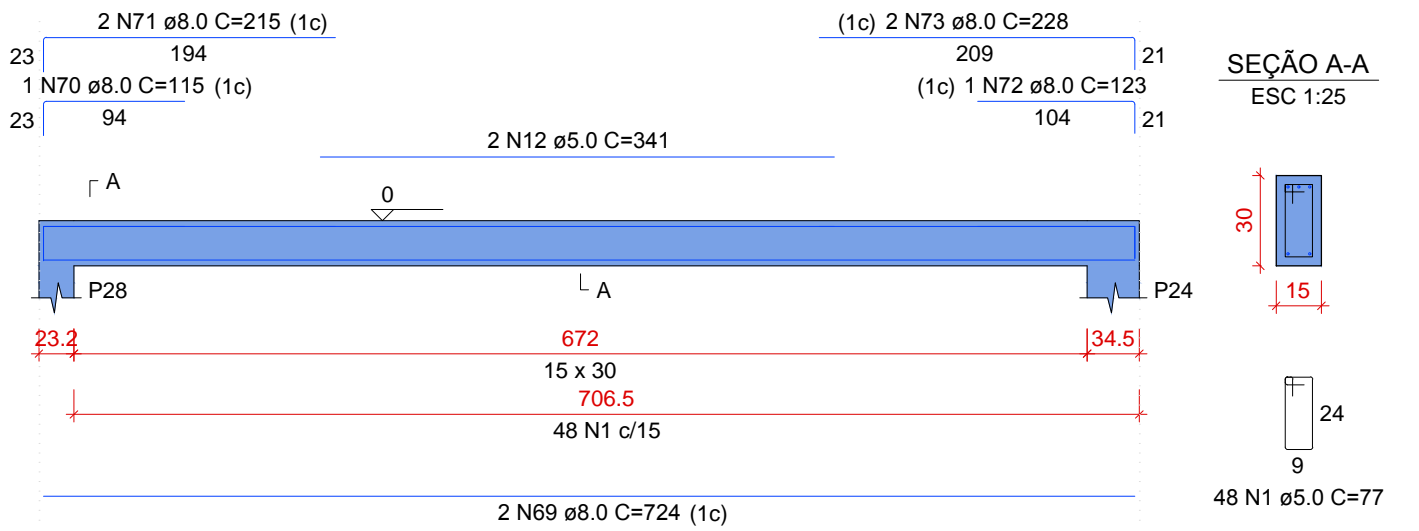
V36

ESC 1:50



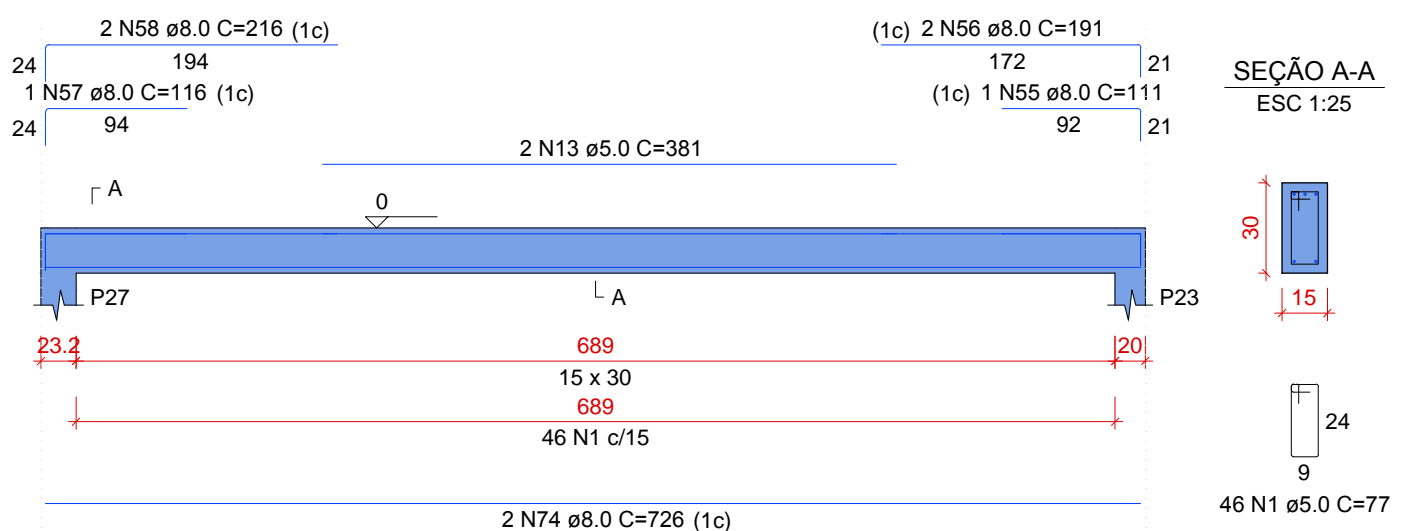
V39

ESC 1:50



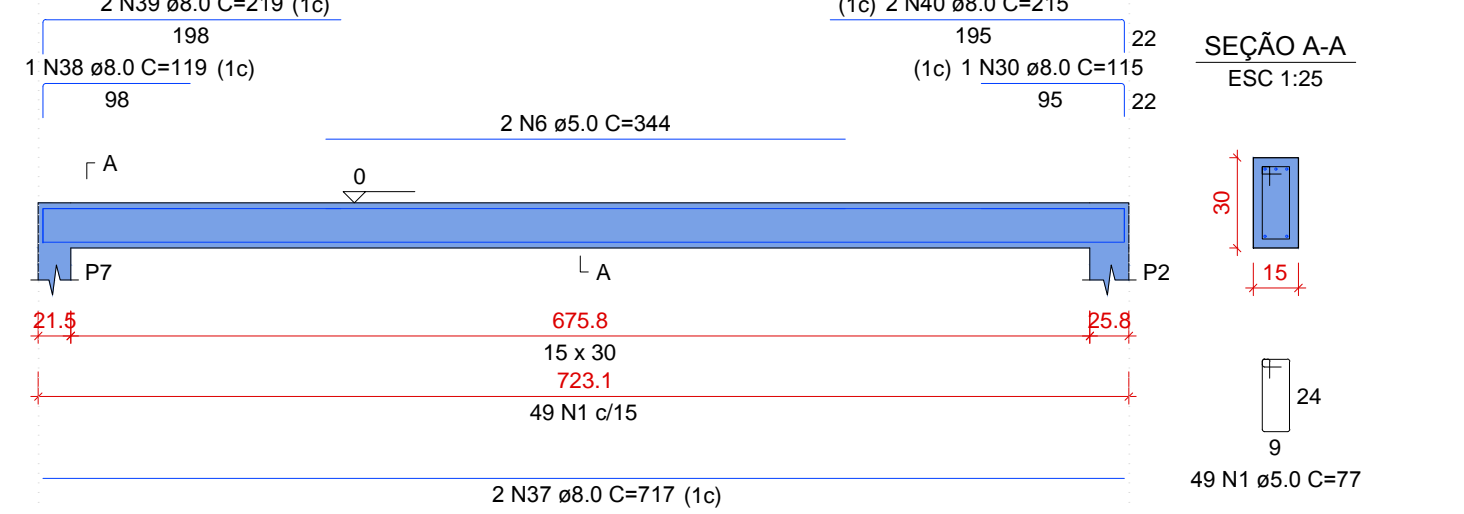
V42

ESC 1:50



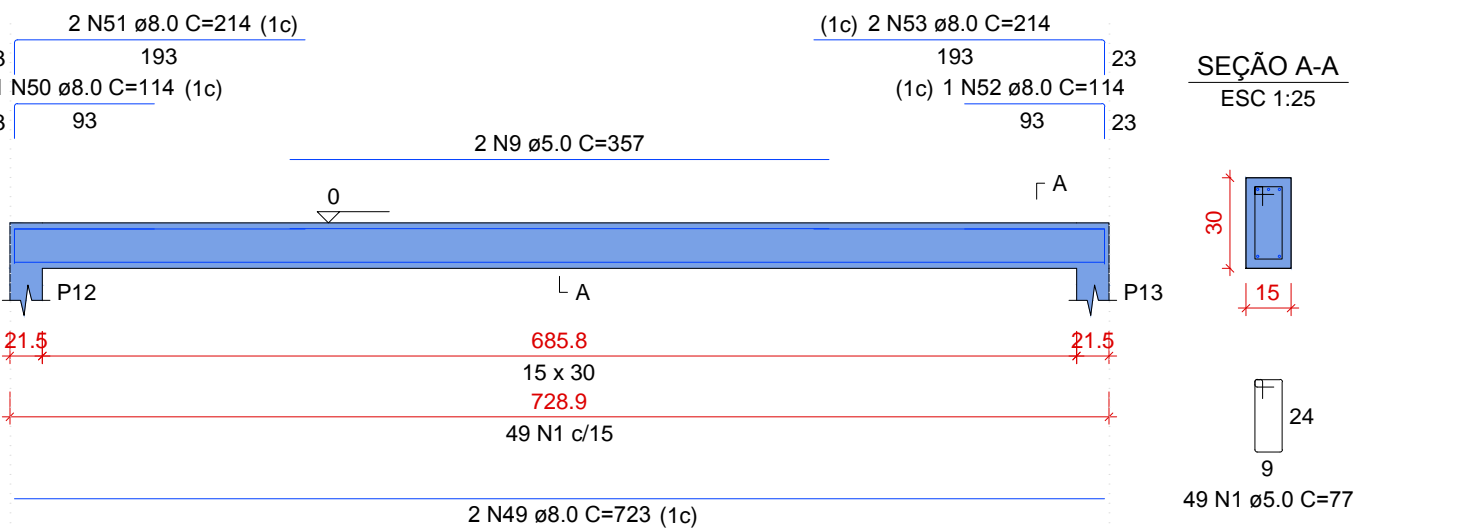
V25

ESC 1:50



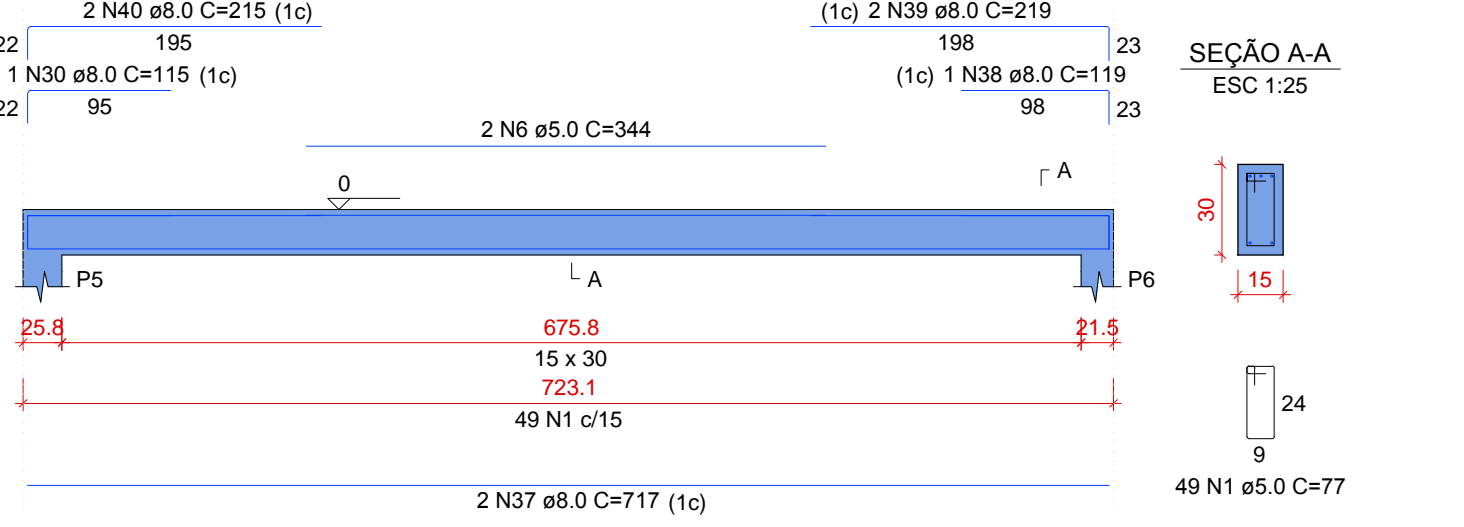
V29

ESC 1:50



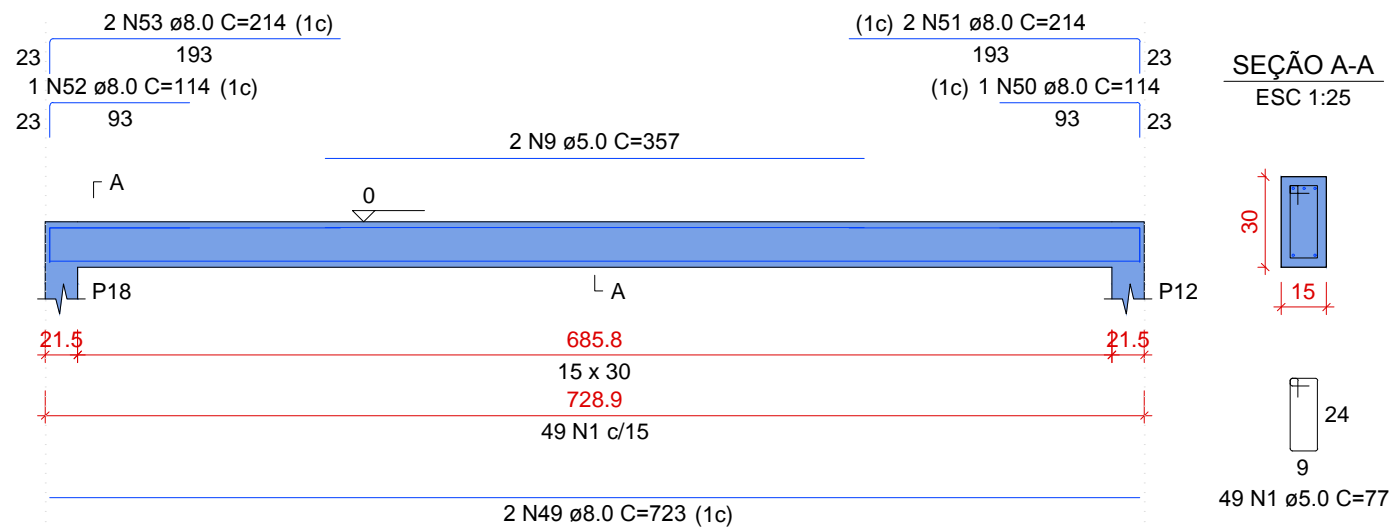
V33

ESC 1:50



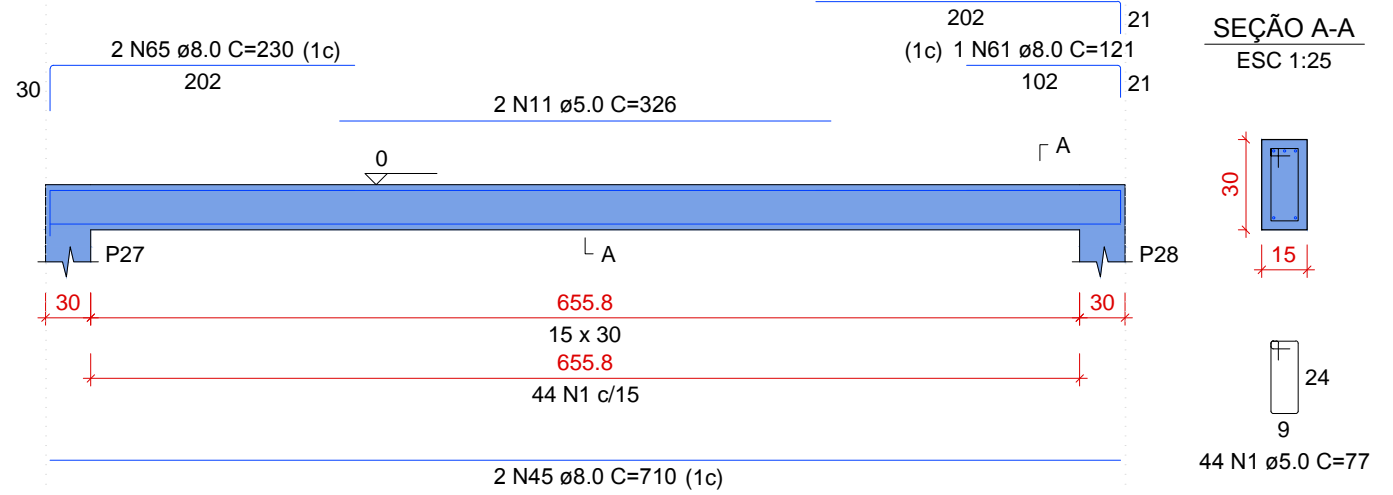
V37

ESC 1:50



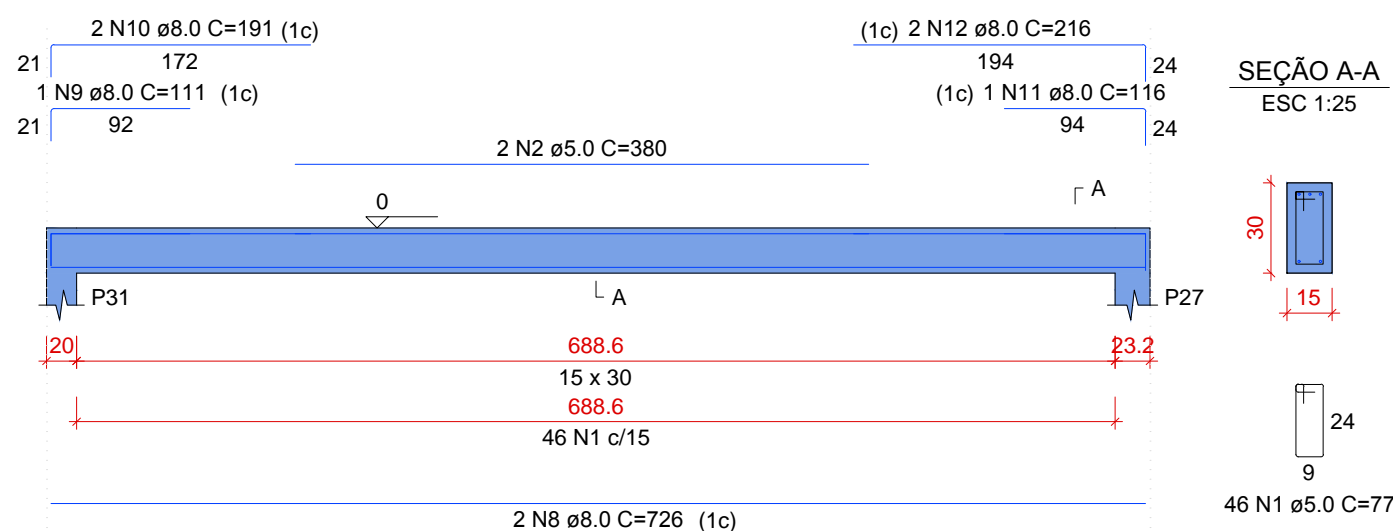
V40

ESC 1:50



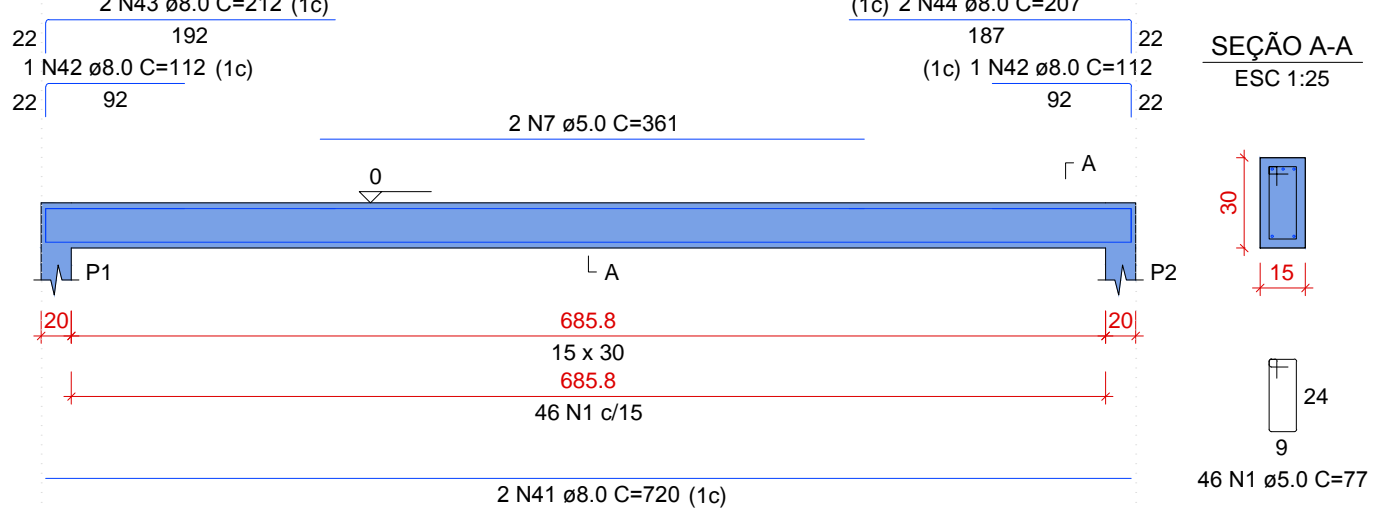
V43

ESC 1:50



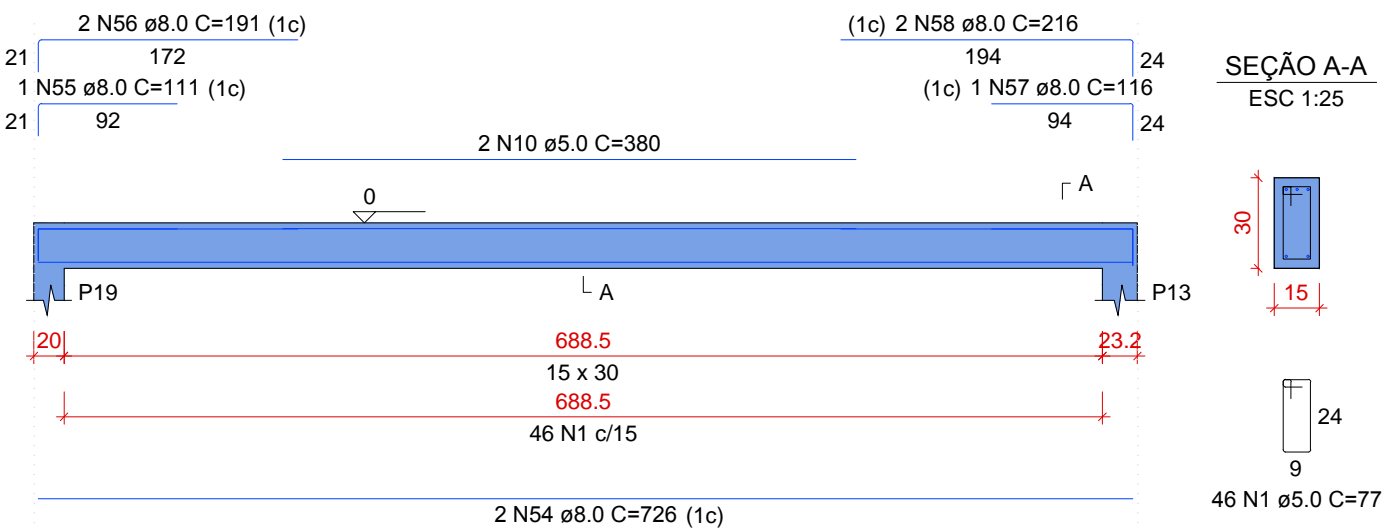
V26

ESC 1:50



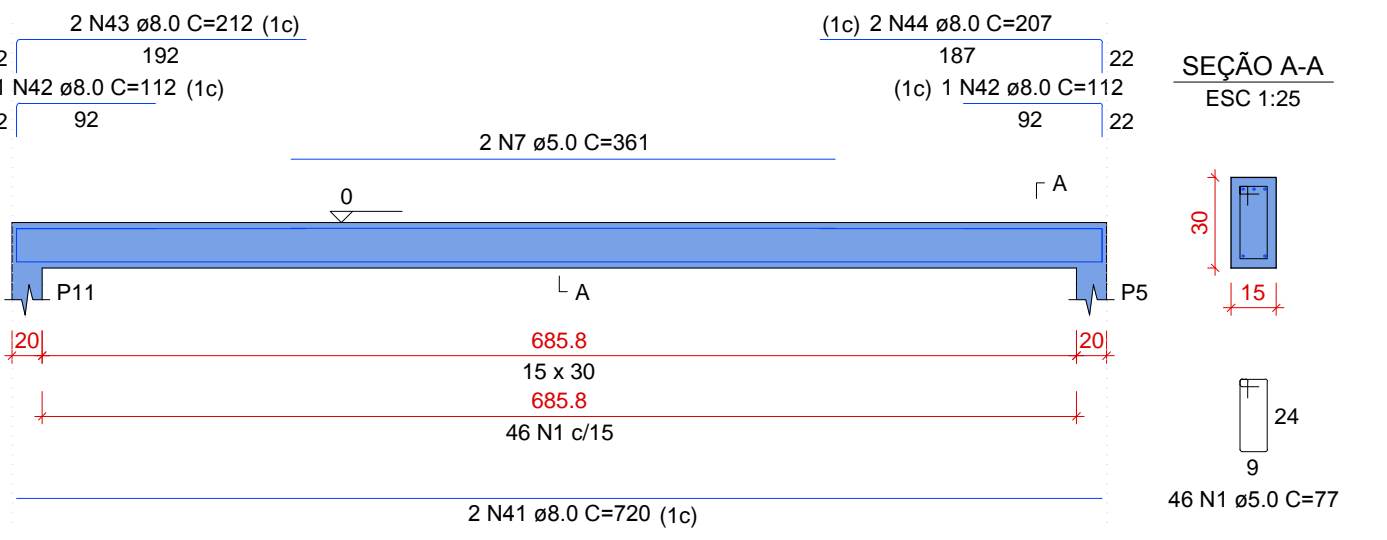
V30

ESC 1:50



V34

ESC 1:50



ESTADO DE MATO GROSSO PREFEITURA MUNICIPAL DE BARRA DO GARÇAS CNPJ 03.429.235/0001-00 Rua Carleão, 522 centro - Barra do Garças MT - CEP 78.600-000		SECRETARIA MUNICIPAL DE PLANEJAMENTO URBANO E OBRAS		Folha : 04/06
		COORDENADAS: 15°22'34,63" S 52°54,95'96" O		
Obra : CONSTRUÇÃO DA ESCOLA INDÍGENA MODULAR - ALDEIA SÃO MARCOS				
Conteúdo : DETALHAMENTO DE VIGAS BALDRAMES				
Local : TERRA INDÍGENA ALDEIA SÃO MARCOS BARRA DO GARÇAS - MT				
Propriedade : Prefeitura Municipal Barra do Garças				
Proprietário: Prefeitura Municipal		Autor do projeto: Responsável Técnico		
Área Construída:	Dimensões:	Escala : INDICADA		
Arquivo : CAD	Data : NOVEMBRO/2021	Projeta : 		